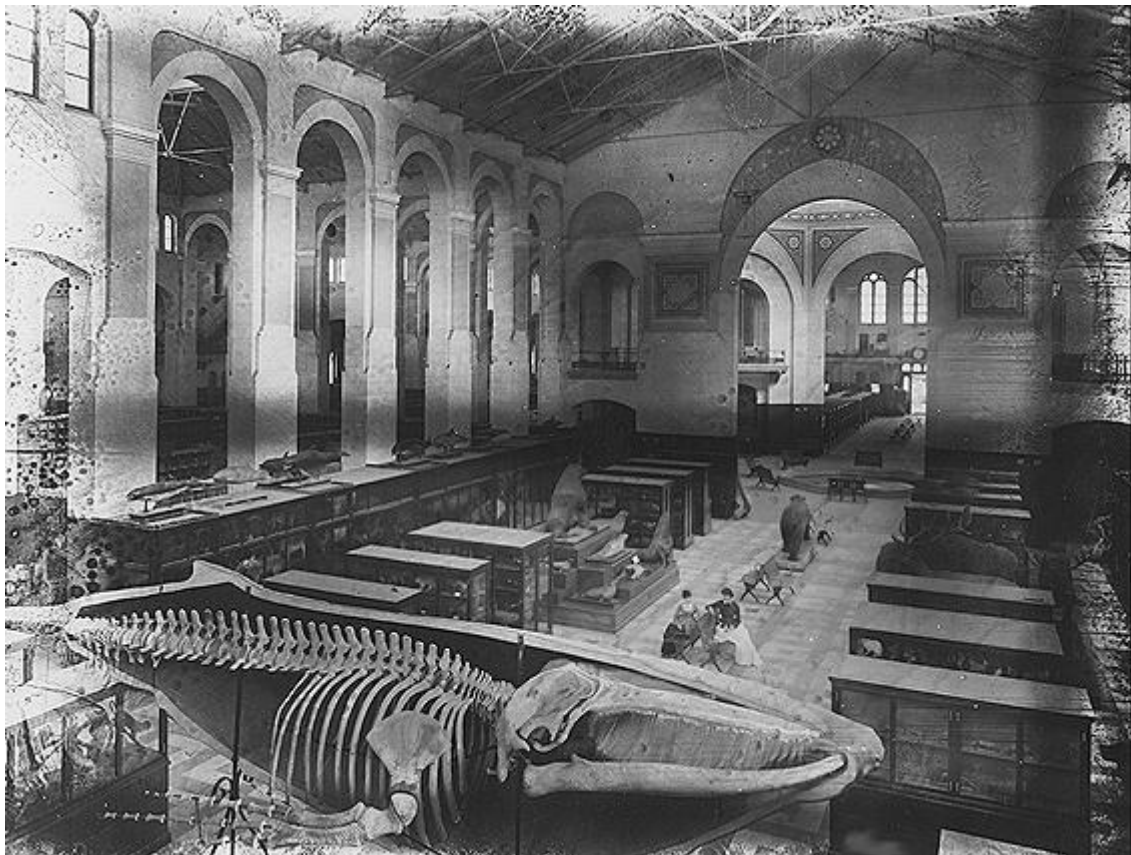


# NOCTURNE

---



**an Opera for Soprano, Baritone & Mixed  
Ensemble**

---

**Phillip A. Cooke**

# NOCTURNE

## an Opera for Soprano, Baritone & Mixed Ensemble

(2011)

---

### PERFORMANCE NOTES

Accidentals apply to the note and each subsequent repetition until the note changes  
All grace-notes to be taken before the beat  
----- indicates gradually change singing style

For James and The Tête-a-Tête Opera Festival 2011

First performed by the Warehouse Ensemble, with Natalie Raybould (soprano) and John Savournin (baritone) at The Riverside Studios, Hammersmith, London on 11 August 2011 as part of The Tête-a-Tête Opera Festival 2011

Duration: 2'

Cover photograph: Victorian Taxidermy

For more information: [www.phillipcooke.com](http://www.phillipcooke.com)

© Phillip A. Cooke (2011)

## PROGRAMME NOTE

*Nocturne* is a short work setting Lancashire poet Sarah Hymas's award winning six word story – "We Buried the Whale at Night." This enigmatic and slightly bizarre story pricked my imagination and I hope to have done it justice in my work.

PAC

## NOCTURNE

We Buried the Whale at Night.

(Sarah Hymas)

### **Instrumentation**

Soprano  
Baritone

Clarinet in B $\flat$   
Cello

Percussion (1 Player):  
Tam-tam (played with bow, preferably double bass)

Piano

# NOCTURNE

SARAH HYMAS

PHILLIP A. COOKE (2011)

for Soprano, Baritone, & Mixed Ensemble

[STAGE: Dimly lit; half-light]

**A**

**X Senza misura; tempo flessibile** (♩ = c.46 - 50)

cues can be given by conductor / singer / piano player

standing side by side with the baritone - slowly raise head to begin singing

standing side by side with the soprano - slowly raise head to begin singing

*pp* *senza espress.*

Night.

*pp* *senza espress.*

Night.

bowed tam-tam

(repeat until instructed otherwise)

*ppp* *pochiss.* *pp*

(almost imperceptible - almost entirely breath noise)

(repeat until instructed otherwise)

*ppp* *poss.*

sul A

*pp* *sempre*

*gliss.* *gliss.*

(repeat until instructed otherwise)

on strings inside piano

(repeat until instructed otherwise)

*pp* *sempre*

*gliss.*

8<sup>va</sup>

*pp* *sempre*

*ped.*

**B**

*pp* *pp* *pp*

Night. Night. Night.

lower head to chin on chest

slowly raise head to begin singing

*pp* *pp* *pp*

Night. Night. Night.

lower head to chin on chest

slowly raise head to begin singing

S.

Bar.

Perc.

Cl.

Vc.

Pno.

C

↓

S. *pp* Night. \_\_\_\_\_ *pp* Night. \_\_\_\_\_ *pp* Night. \_\_\_\_\_ *pp* Night. \_\_\_\_\_ lower head to chin on chest

Bar. *pp* Night. \_\_\_\_\_ *pp* Night. \_\_\_\_\_ *pp* Night. \_\_\_\_\_ *pp* Night. \_\_\_\_\_ lower head to chin on chest

Perc.

Cl.

Vc.

Pno

D

↓

S. - c.4" **G. P.** *mf* Spoken - in a resonant tone 3 STAGE: Lights off  
 We Bur - ied the Whale\_ at \_\_\_\_\_ Night.

Bar. **G. P.** *mf* Spoken - in a resonant tone 3  
 We Bur - ied the Whale\_ at \_\_\_\_\_ Night.

Perc. walk to form a line with vocalists (l.v.) **G. P.** *mf* Spoken - in a resonant tone 3  
 We Bur - ied the Whale\_ at \_\_\_\_\_ Night.

Cl. walk to form a line with vocalists **G. P.** *mf* Spoken - in a resonant tone 3  
 We Bur - ied the Whale\_ at \_\_\_\_\_ Night.

Vc. walk to form a line with vocalists **G. P.** *mf* Spoken - in a resonant tone 3  
 We Bur - ied the Whale\_ at \_\_\_\_\_ Night.

Pno walk to form a line with vocalists (l.v.) **G. P.** *mf* Spoken - in a resonant tone 3  
 We Bur - ied the Whale\_ at \_\_\_\_\_ Night.